

# FLINDERS VISION Watkins Lens

The gold standard precision slit lamp fundus lens



1.0x Magnification



Flinders Vision



Advanced Optical Design

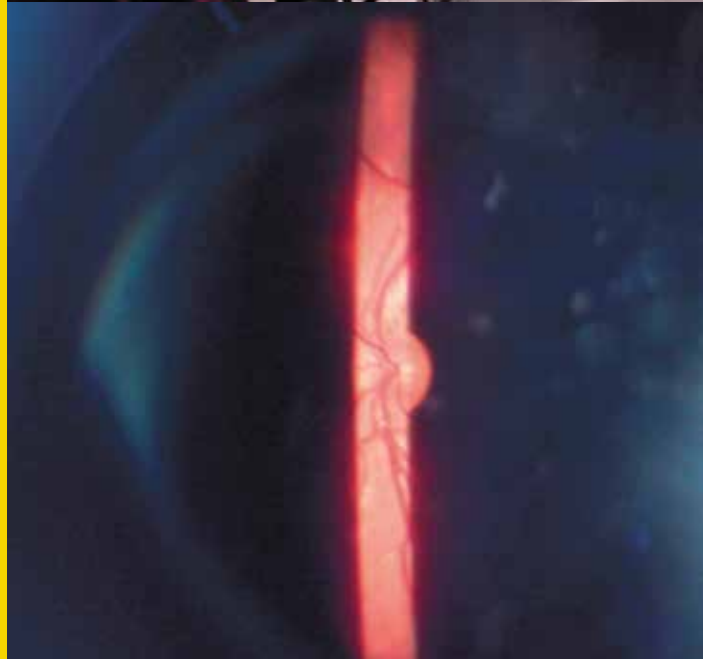
# WATKINS SLIT LAMP LENS

## IS EASIER TO USE

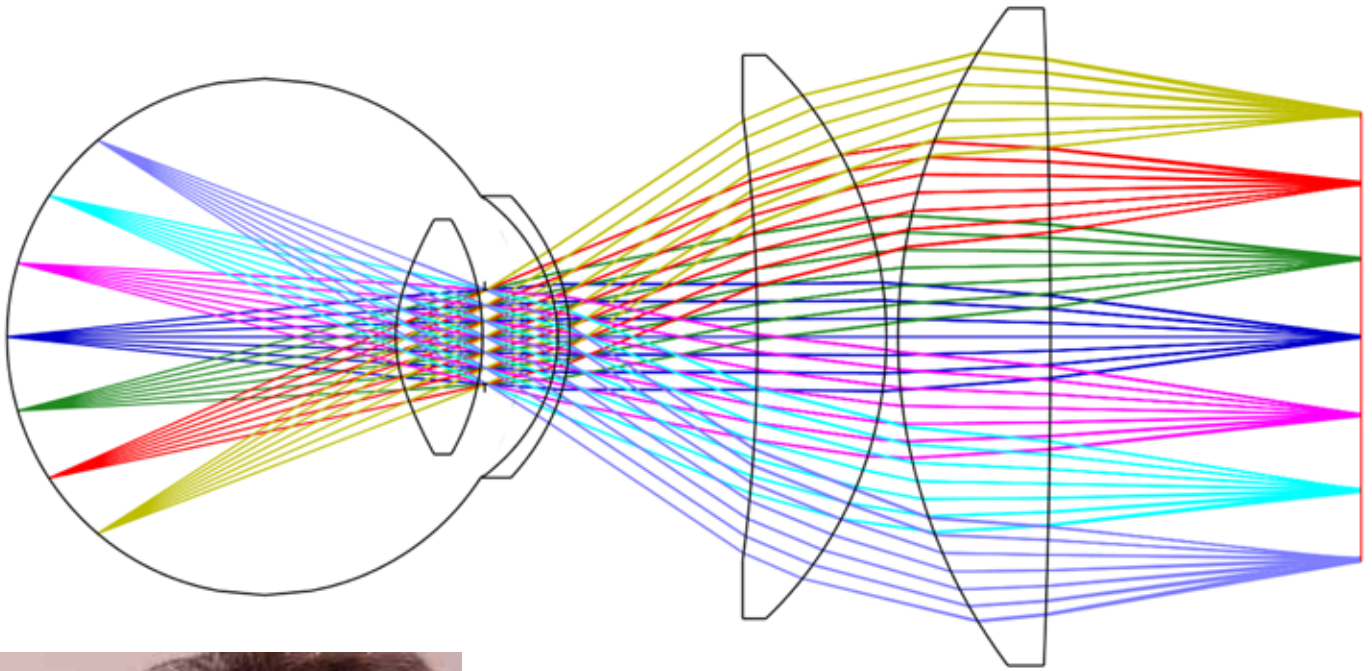
- Deep knurling means the lens is easy to hold.
- The working distance is comfortable for both practitioner and patient.
- The lens housing is designed to easily clear the patient's facial features.
- Both the entrance pupil and the exit pupil are large, so lens alignment with the patient's pupil and with the slit lamp is less critical.
- All optical surfaces have a high performance multi-layer anti-reflection coating to minimise reflections in the image.

## PROVIDES A SHARPER VIEW OF THE FUNDUS

- The two-lens design provides four high precision optical surfaces for control of both ray and wave aberrations of all orders.
- The lens is made from precision optical glass.
- Image quality is controlled across the whole field, not just at a few points, ensuring resolution is high across the whole fundus.
- Vignetting of the patient's pupil is taken into account to provide maximum image quality right to the edge.
- The fundus image is bright, as all of the light is converged into the slit lamp.







# LENS SPECIFICATION

## LENS SPECIFICATION

Magnification <sup>1</sup>	1.0x
Field of view <sup>2</sup>	
- fully vignetted <sup>3</sup>	85°
- unvignetted (4mm pupil)	70°
- unvignetted (6mm pupil)	60°
Eye relief (cornea—fundus lens)	8.0 mm
Working distance (fundus lens to pupil)	12.1 mm
Entrance pupil diameter	6 mm
Exit pupil diameter	26 mm

<sup>1</sup> Paraxial magnification from retina to fundus lens image.

<sup>2</sup> The field of view is measured from the edges of the field between the patient's eye and the fundus lens.

<sup>3</sup> Vignetting occurs when some of the light from the edge of the fundus does not enter the fundus lens. In an unvignetted field, all light emerging from the patient's eye is collected by the fundus lens.

Note: This lens is not suitable for autoclaving.



## CONTACT

**TO PURCHASE A LENS OR FOR  
MORE INFORMATION:**

Email: [flindersvision@flinders.edu.au](mailto:flindersvision@flinders.edu.au)

Tel: +61 (8) 7221 8700

Fax: +61 (8) 7221 8729

[www.flindersvision.com.au](http://www.flindersvision.com.au)

**FLINDERS VISION**

Flinders University  
Sturt Drive  
Bedford Park  
Adelaide SA 5042  
Australia



Flinders Vision